

# Multiple use of forests and reconciliation of use modes

*Rainer Peltola and Seija Tuulentie*

*[rainer.peltola@luke.fi](mailto:rainer.peltola@luke.fi), [seija.tuulentie@luke.fi](mailto:seija.tuulentie@luke.fi)*

*ASR 26.11.2019*

# 1. Multiple use of forests and NTFPs

- Forests are the most popular environments in Finland\*

Vaestoryhmä Population category	Marjastus Picking wild berries		Sienestys Picking mushrooms		Polttopuun korjuu Harvesting of fuelwood		Vapaa-ajan metsänhoito Forest management in leisure time		Metsästys Hunting		Patikointi Hiking		Retkeily, erävaellus Backpacking	
	%	kpl number	%	kpl number	%	kpl number	%	kpl number	%	kpl number	%	kpl number	%	kpl number
<b>Koko väestö – Total population</b>	58	8	40	7	42	13	16	11	8	20	27	15	10	7
<b>Sukupuoli – Gender</b>														
Nainen – Female	65	8	45	7	35	11	9	8	2	13	24	14	8	6
Mies – Male	51	7	36	7	50	15	23	12	14	21	29	15	12	8
<b>Ikä – Age</b>														
15–24	43	5	24	5	30	9	10	9	5	27	25	9	15	7
25–44	54	5	35	6	39	10	15	7	9	20	30	12	12	6
45–64	66	9	49	8	49	15	19	12	9	18	28	18	8	9
65–74	64	11	49	8	47	21	18	17	7	20	16	24	5	10
<b>Asuinkunta – Type of municipality of residence</b>														
Kaupunkimainen – Urban	55	7	40	7	37	12	12	9	6	18	27	15	10	8
Taajaan asuttu – Semi-urban	62	9	41	8	50	14	21	11	11	18	25	13	8	7
Maaseutumainen – Rural	66	9	39	8	57	16	27	15	15	23	25	15	11	7
<b>Suuralue – Major region</b>														
Etelä-Suomi – Southern Finland	54	7	45	7	38	12	13	8	5	18	26	15	9	7
Länsi-Suomi – Western Finland	58	7	34	7	44	14	18	12	7	21	25	14	9	8
Itä-Suomi – Eastern Finland	68	9	49	8	54	15	24	13	15	18	26	18	10	8
Pohjois-Suomi – Northern Finland	65	9	25	6	45	14	17	15	17	24	32	11	15	7

\*Tyrväinen, L., Korpela, K. & Ojala, A. teoksessa Tyrväinen, L., Kurttila, M., Sievänen, T., & Tuulentie, S. (toim.,2014) Hyvinvointia metsästä. SKS.

	Average biological harvest (Mkg / year)	Average utilizable harvest (Mkg / year)	Average utilized harvest (Mkg / year)*
Bilberry	180	60	10
Lingonberry	260	80	20

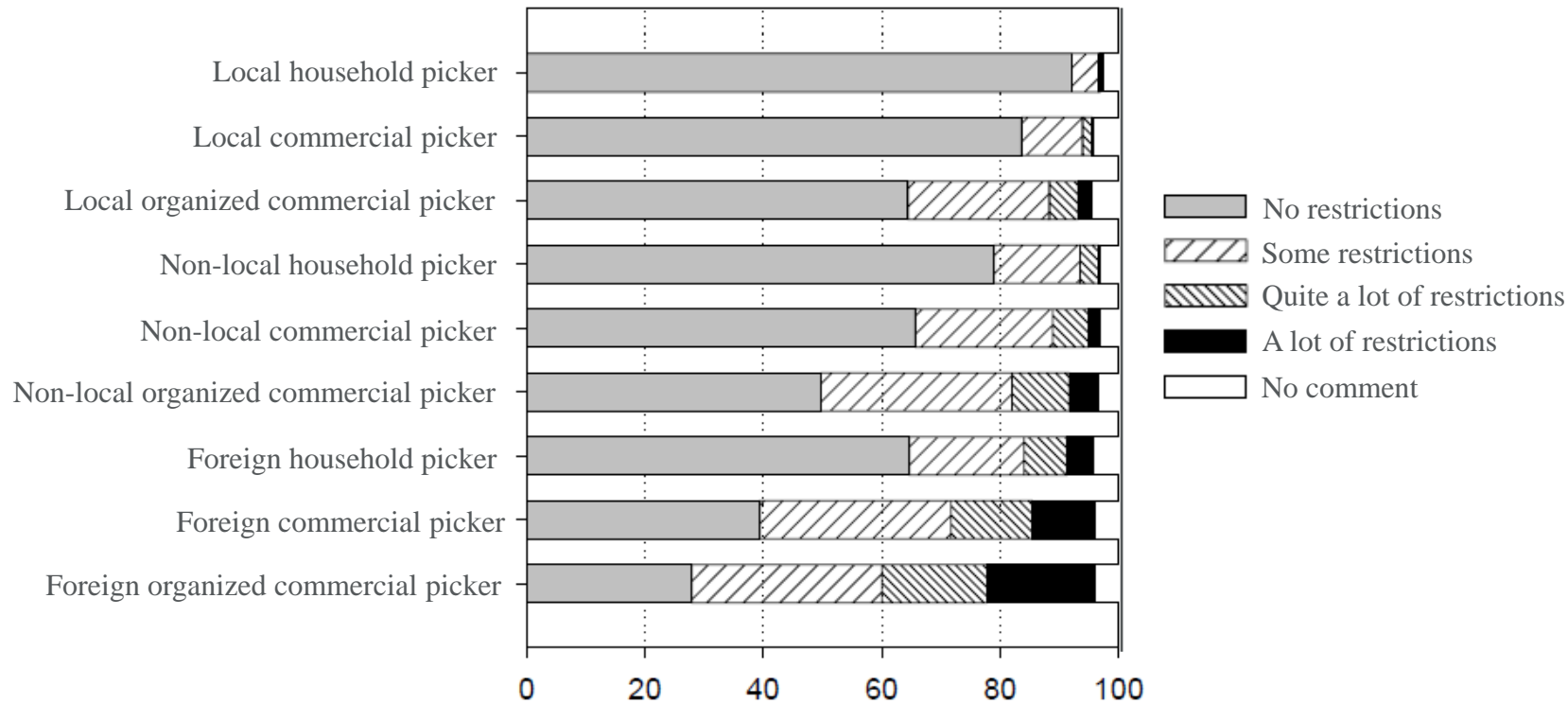
\* 1997 estimation

- NTFP raw material monetary value ~ 50 -100 M€/y
- Cultural value ~ uncountable (contains too many elements to be counted)

# Transition of NTFP utilization

- New vs. old stakeholders and interests
  - NTFP businesses vs. household / small scale use, locality vs. globality, urbanity vs. rurality, adolescents vs. seniors, migration and immigration, etc
- Immigrants in northern nature: Polut project (2017-2019, coordinator LUAS, funded by ESF; continuation as KUPO?)
  - Based on the notion that even those immigrants who had lived in northern Finland for many years did not have much connection to natural environments although being in nature and using of natural products such as berries, mushrooms and fish form an extremely important part of the lifestyle in the north.

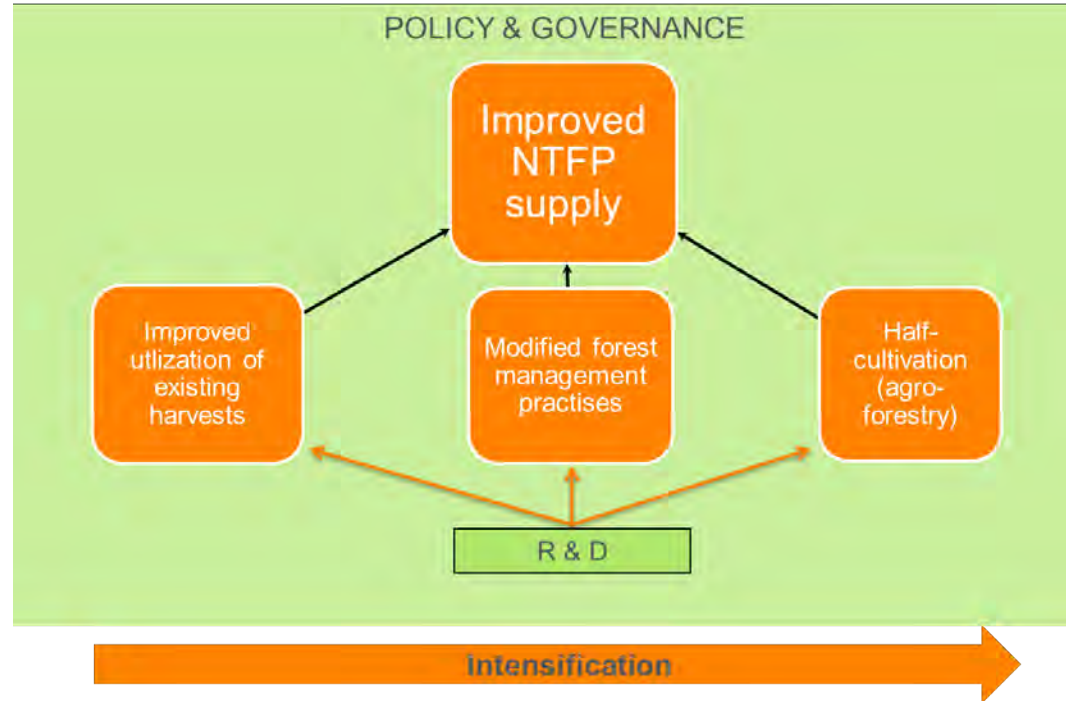
Jokela, L. & Uusitalo, M. (2019) Yhteinen luonto kotouttaa – Polut-hankkeen kokemuksia ja tuloksia luontolähtöisestä kotoutumisesta. Hyvinvointi ja kulttuuri 14/2019 <https://www.lapinamk.fi/loader.aspx?id=07ddc146-9729-4180-9147-0d33888541a3>

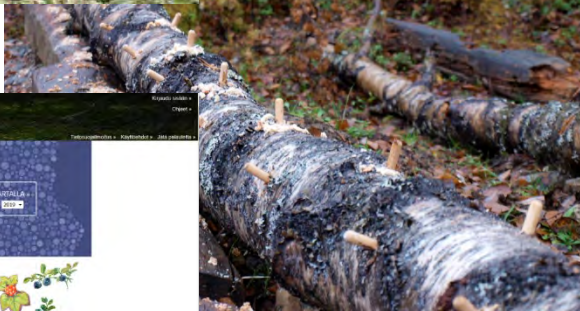


Peltola, et al. 2014. Social licence for the utilization of wild berries in the context of local traditional rights and the interests of the berry industry. *Barents Studies* 1(2): 24-49.

# New tools and concepts for NTFP utilization

- Forest management
- Half-cultivation
- Digitalization
  - GIS
  - Citizen science
  - Participation
  - Community
  - Gamification





Luke Marjahavainnot.fi

**Marjahavainnot.fi-palvelu**

Marjahavainnot.fi -palvelu on tontin suunnittelun – maastokas, puunkäytön ja suojauksen – toteuttamiseen tarkoitettu palvelu, jolla kerätään kartoituksen tiedot ja palvelu tarjoaa tietoja tontin suunnittelusta. Palvelu on saatavilla kaikilla tontilla.

Pöytäselainten kautta voit tehdä seuraavat asiat: "Havainnot kartalla" toiminnon kautta. Havainnot ja kaikki tiedot ovat täysin ilmaisia, mutta kartoitus on maksullinen.

[Käyttöohjeet >](#)

**Ajankohtaista**

20.11.2019 Luke  
Havainnot ohjelmalla (toimintatila) - Luke-havainnot.fi

**Marjalajit**

Lisättyä pöytäselainta  
Marjahavainnot.fi - palvelun  
marjahavainnot alfa elementtien  
kautta.

Maastikka >  
Puoliakka >  
Suomenaika >

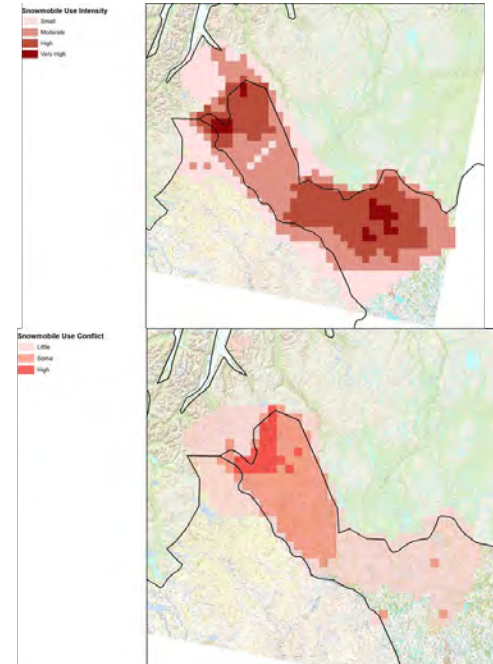
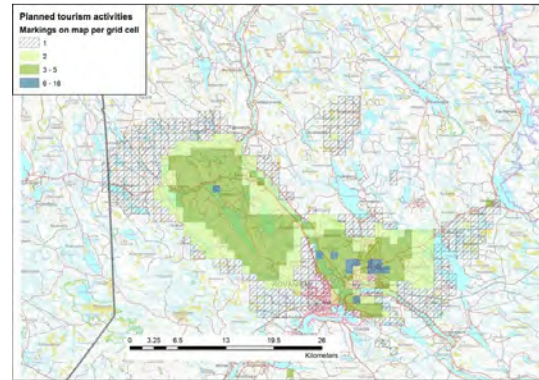


## 2. Some themes in nature-based tourism studies

# Participatory methods in nature-based tourism planning – PPGIS as an example (BuSK-project, NPA, 2016-2019)

- Mapping of stakeholders' (locals, tourists, all interested) views of land use issues via internet
- Examples from 1) Rovaniemi: future directions of tourism and 2) Enontekiö: conflictual issue in Käsivarsi

Forthcoming book: McDonagh & Tuulentie (eds) 'Sharing Knowledge for Land Use Management: Decision-making and Expertise in Europe's Northern Periphery'. Edward Elgar Publishing



# Tourism and climate change: a survey conducted in Lapland tourism parliament in 2009

	5 vuoden kuluessa vaikuttavat asiat <i>Kpl</i>	%	15-30 vuoden kuluessa vaikuttavat asiat <i>Kpl</i>	%
Talouskehitys	19	45,2	8	19,0
Markkinointi	12	28,6	10	23,8
Energia, yhteydet	8	19	6	14,3
Ilmastonmuutos	7	16,7	13	31
Kestävä kehitys	7	16,7	6	14,3
Luonto	6	14,3	3	7,1
Arvot, työ ja vapaa-aika	6	14,3	3	7,1
Suunnittelu, turvallisuus	3	7,1	8	19,0
Tekninen kehitys	0	0,0	4	9,5

What affects to tourism in 5 years or 15-30 years span according to tourism sector actors? (N=42)

Kietäväinen, A. & Tuulentie, S. (2013) Ilmastonmuutokseen varautuminen Pohjois-Suomen matkailussa. *Alue ja Ympäristö* 42.(2): 42-52.

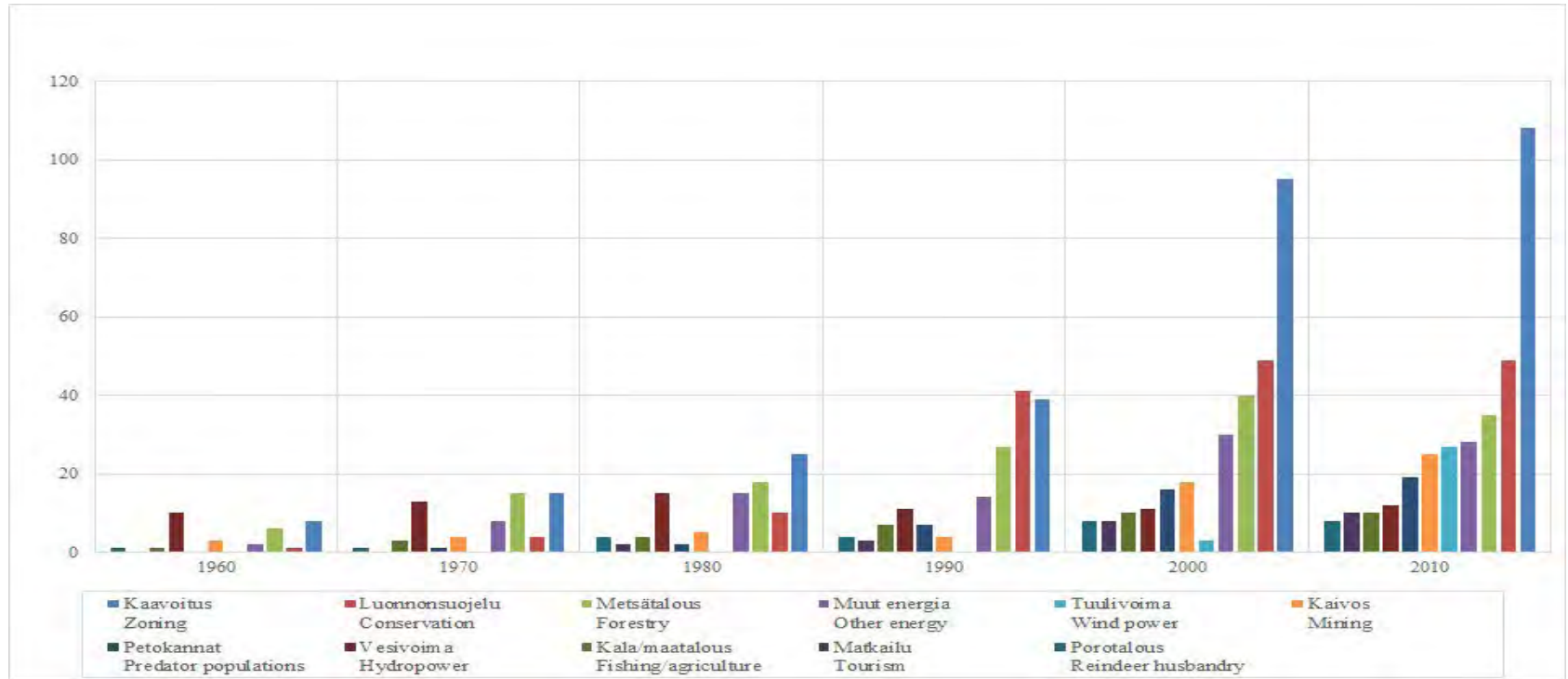
# From hard to soft adventures

- New tourist groups are less prepared to act in Arctic nature
- Entrepreneurs and guides have challenges in distinguishing diverse preferences and individual perceptions of adventure
- Skills related to articulating risks to diverse tourists groups become highlighted
- Do not need 'real wilderness'
- Rantala, O., Hallikainen, V., Ilola, H. & Tuulentie, S. (2018) The softening of adventure tourism. *Scandinavian Journal of Hospitality and Tourism*, 18:4, 343-361.



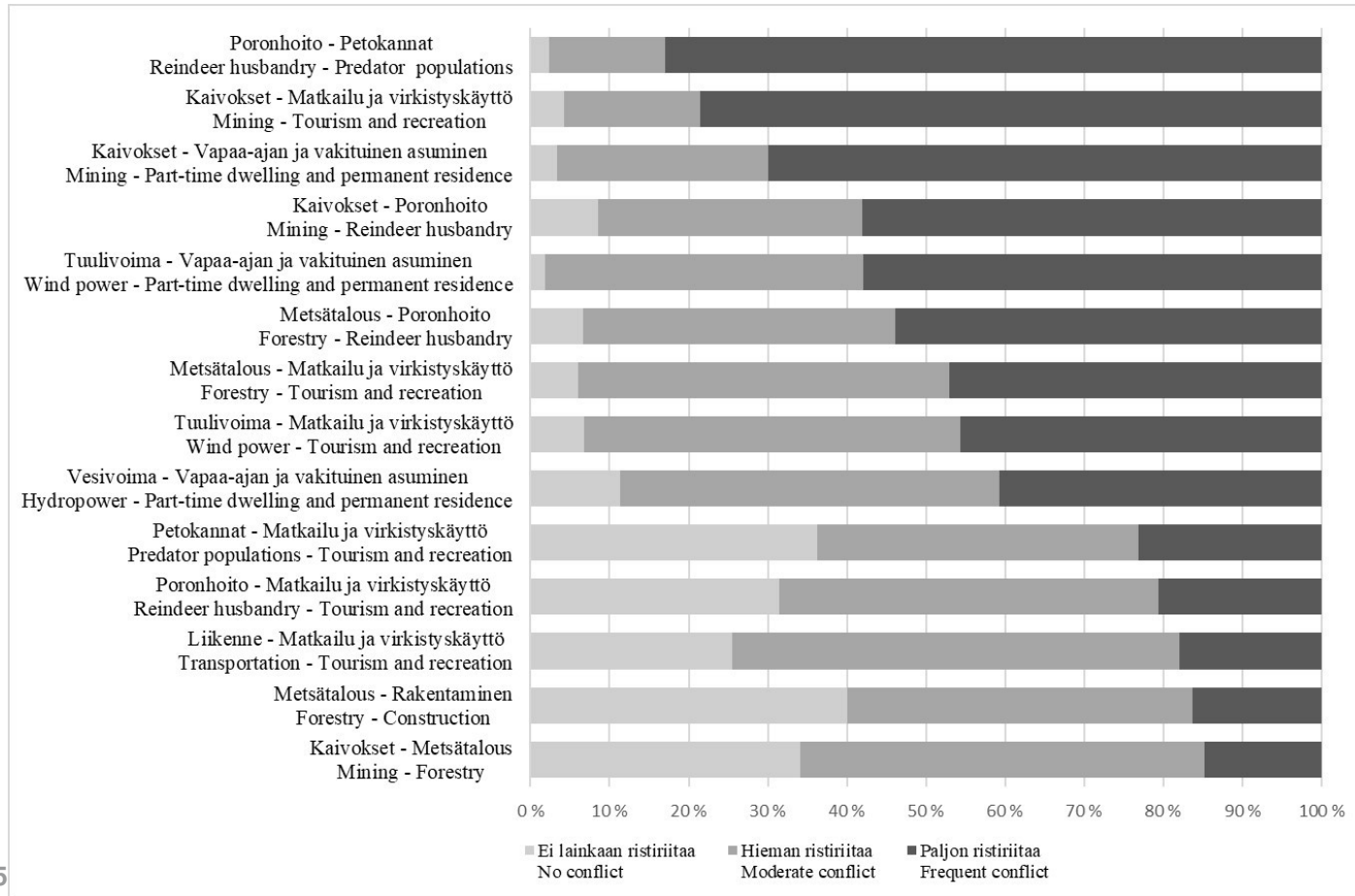
### 3. Conflicts and the need for reconciliation

# Environmental conflict topics over decades



- *Pettersson ym. 2017: Ympäristökonfliktit Suomessa: mistä on kiistelty ja miksi? Terra129: 2, 87–107*

# Reconciliation of use modes— what are the most conflictual issues?





# Possibilities to manage mining conflicts

- Social license to operate: local acceptance gained by the company
- Corporate social responsibility(CSR): formal procedure in most of the companies
- Practical tools:
- Community liaison committees (CLC):
  - Mediators between the company and community in local issues
- Impact and benefit agreements (IBA, CDA)
  - Formal agreements between companies and (usually) *indigenous* communities
- More local benefits are demanded although CLCs seem to alleviate conflict potentiality
- Tuulentie, S., Halseth, G., Kietäväinen, A., Ryser, L. & Similä, J. (2019) Local community participation in mining in Finnish Lapland and Northern British Columbia, Canada – Practical applications of CSR and SLO. Resources Policy, 61, June 2019, 99-107.



Kiitos!